

# POEMA ALPACA SHAWL

**DIFFICULTY** =

## MATERIALS

**Yarn:** [POEMA ALPACA](#) by Laines du Nord

Single size: 1 cake col. 104.

**Circular needles:** 7 mm tips with 80 cm cable.

**Other:** stitch marker, darning needle, scissors, tape measure, cable needle.



## POINTS USED

### STITCHES USED

**Purl garter stitch:** purl.

**Open-work stitch:** multiple of 4 stitches, following the instructions and the diagram.

## ABBREVIATIONS

### ABBREVIATIONS

**RS** = right side of the work

**WS** = wrong side of the work

**r** = row / s

**st / sts** = stitch / es

**col** = color

**k** = knit

**yo** = yarn over (wrap yarn around the right-hand needle, once)

**yo2** = yarn over twice (wrap yarn around the right-hand needle, twice)

**tog** = together

**rep** = repeat

**rep \*\*** = repeat from \* to \*

**p** = purl

**skp** = slip 1, knit 1, pass slipped stitch over (slip 1 stitch, knit the next stitch, pass slipped stitch over the knitted stitch).

**K2tog (knit 2 stitches together)** = insert the right-hand needle through the next 2 stitches on left-hand needle and knit them together.

**p2tog (purl 2 stitches together)** = insert the right-hand needle through the next 2 stitches on left-hand needle and purl them together.

**p3tog (purl 3 stitches together)** = insert the right-hand needle through the next 3 stitches on left-hand needle and purl them together.

**1/1 RC** = slip 1 stitch onto a cable needle and let it hang in back of work, knit 1, then knit stitch from cable needle.

## MEASURES

### MEASURES OF THE GARMENT - after blocking

**Single size**

**Height:** 80 cm

**Wingspan:** 160 cm

## PROCEDURE

### PATTERN

**Band in purl garter stitch.**

Cast-on 120 sts.

**R from 1 to 6:** purl.

**Open-work section**

**R 1:** p3, p2tog, k1, yo, skp, k2tog, \* yo2, skp, k2tog\*, rep \*\* until 6 sts from the end, yo2, skp, p4.

**R 2:** purl, working (k1 and p1) in every yo2.

**R 3:** p3, p2tog, p1, 1/1 RC, p2, \* p2, 1/1 RC \*, rep \*\* until 7 sts from the end, p2, k1, p4.

**R 4:** purl until the end of the row.

**R 5:** p3, p2tog, k1, yo, skp, k2tog, yo2, \* skp, k2tog, yo2 \*, rep \*\* until 8 sts from the end, skp, k2tog, yo2, p4.

**R 6:** purl, working (k1 and p1) in every yo2.

**R 7:** p3, p2tog, p1, 1/1 RC, p2, \* 1/1 RC, p2 \*, rep \*\* until 7 sts from the end, 1/1 RC, p1, p4.

**R 8:** purl until the end of the row.

**R from 9 to 88:** always rep from r 1 to 8.

Continue as follow:

**R 89:** p3, p3tog, yo, skp, k2tog, \* yo2, skp, k2tog \* rep \*\* until 6 sts from the end, yo2, skp, p4.

**R 90:** purl, working (k1 and p1) in every yo2.

**R 91:** p3, p3tog, k1, p2, 1/1 RC, \* p2, 1/1 RC \* rep \*\* until 7 sts from the end, p2, k1, p4.

**R 92:** purl until the end of the row.

**R 93:** p3, p3tog, k2tog, yo2, \* skp, k2tog, yo2 \* rep \*\* until 8 sts from the end, skp, k2tog, yo, p4.

**R 94:** purl, working (k1 and p1) in every yo2.

**R 95:** p3, p3tog, p1, 1/1 RC, p2, \* 1/1 RC, p2 \* rep \*\* until 7 sts from the end, 1/1 RC, p1, p4.

**R 96:** purl until the end of the row.

**R from 97 to 148.:** always rep from r 89 to 96.

**R 149:** p3, p3tog, k2tog, yo2, skp, k2tog, yo, p4.

**R 150:** purl, working (k1 and p1) in every yo2.

**R 151:** p3, p3tog, p1, 1/1 RC, p1, p4.

**R 152 and even R:** purl until the end of the row.

**R 153:** p3, p3tog, p6.

**R 155:** p3, p3tog, p4.

**R 157:** p3, p3tog, p2.

**R 159:** p3, p3tog.

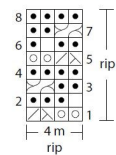
## FINISHING

Bind off the 4 rem sts. Weave in the ends. Block to size using blocking needles and pins.

## PHOTOGALLERY



Punto traforato (modulo di ripetizione)

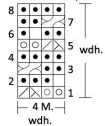


Legenda

- 1 dir
- 1 rov
- ⊗ 1 Get
- ⊗ 2ins
- ⊗ 1 acc
- ⊗ 1/1TD

If dispari (LD) si leggono da destra a sinistra  
If pari (LR) si leggono da sinistra a destra

Lochmuster (Wiederholungsmodul)

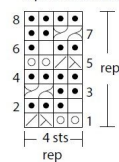


Legende

- 1 re.
- 1 li.
- ⊗ 1 U
- ⊗ 2zus
- ⊗ 1 Überzug
- ⊗ 1/1TD

Die ungeraden R. (RS) werden von rechts nach links gelesen  
Die geraden R. (LS) werden von links nach rechts gelesen

Open-work stitch (repetition module)



Key

- k1
- p1
- ⊗ yo
- ⊗ k2tog
- ⊗ skp
- ⊗ 1/1 RC

Read the odd rows (RS) from right to left  
Read the even rows (WS) from left to right